

NETTLEFISH II Manual Table Of Contents **Safety Notice** **Hardware Diagram** **Hardware Diagram**

Package Contents 1

Safety Notice 2

Product Features 2

Hardware Diagram 3

Connect to PC/Laptop 5

Connect to MP3/Smartphone/Tablet 5

Connect to XBOX ONE™ 6

Connect to PS4™ 6

Important Information 7

Package Contents

1. One EXSOUND NETTLEFISH II Headset
2. One EXSOUND NETTLEFISH II Detachable Microphone
3. One EXSOUND NETTLEFISH II Built-in Microphone
4. One EXSOUND NETTLEFISH II Soft Carry Bag
5. One EXSOUND Volume Controller for PS4™ (optional)
6. One Operation Manual

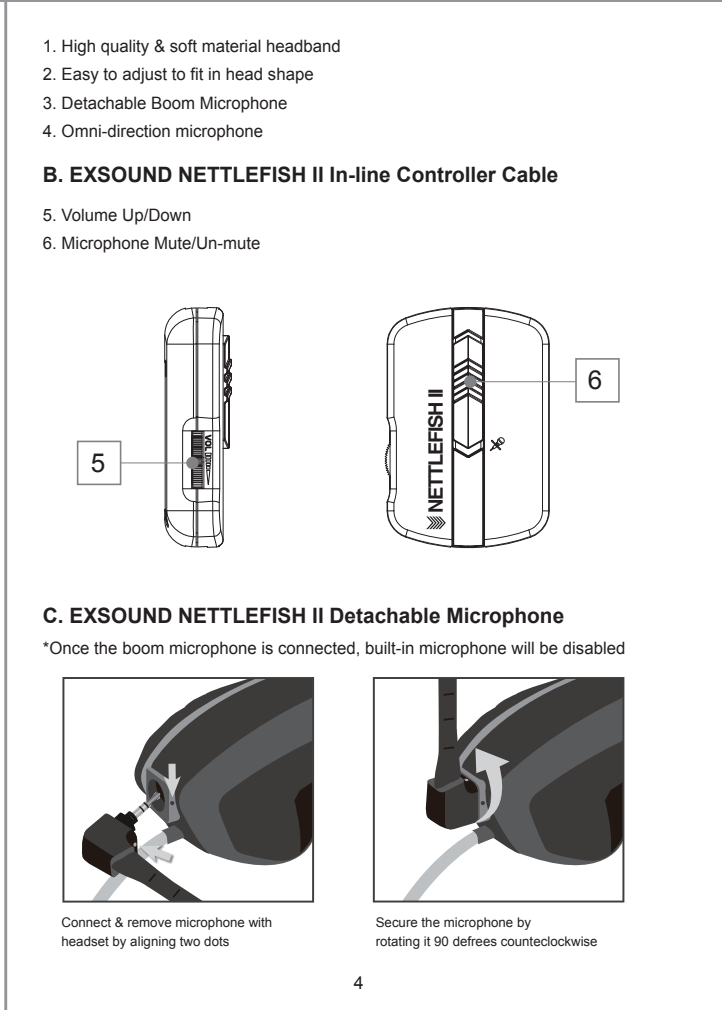
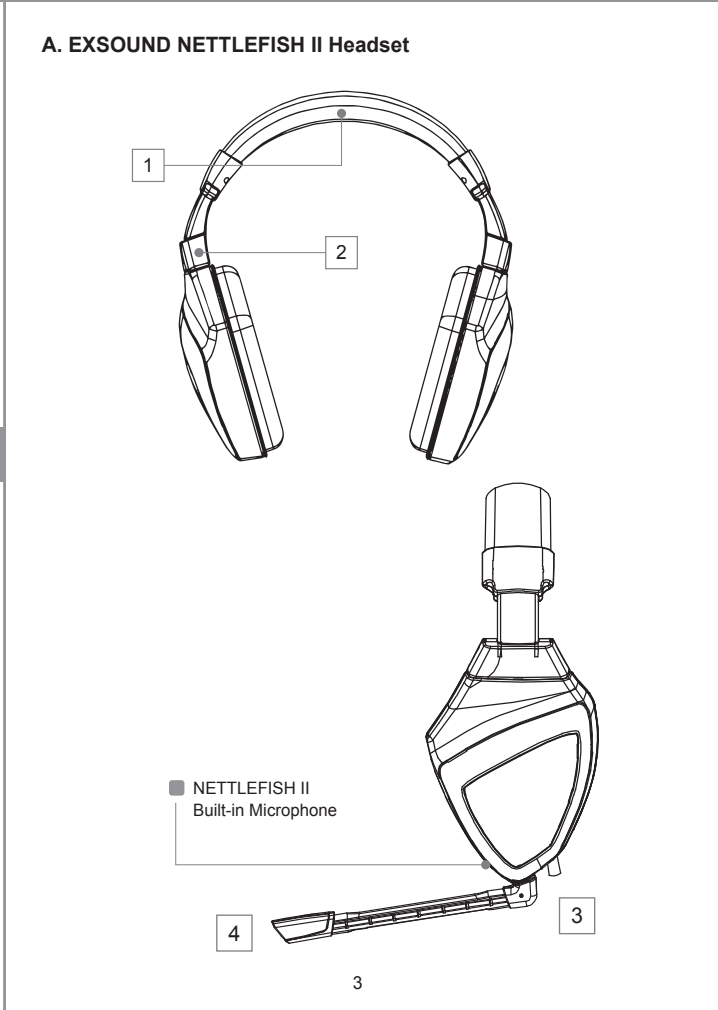
Warning

Continued exposure to high volumes of noise in headsets can cause long-term hearing damage. Your ears will adapt to loud volume levels over time and damage your hearing even if you don't feel any discomfort. Maintain the volume at an adequate level is important while using the headset. The louder the sound is, the less time it takes to affect your hearing. It is recommended that before putting the headset on, turn the volume down completely, then slowly increase it to a moderate and comfortable level.

Product Features

EXSOUND NETTLEFISH II – Supreme Stereo Sound Quality for Gaming and Music Entertainment Analog Interface. Simply Just Plug In and Use

- Compatible with PS4™, Xbox One, Smartphone, Tablet, and laptop for Gaming/Music/Movie entertainment
- High-fidelity sound quality with crystal clear high & mid-range and booming bass
- Detachable mic & Built-in mic for gaming and on-the-move phone call
- Breakout cable design, one headset with two interfaces
- Foldable design. Easy to carry and store with the included soft carry bag
- Comfortable design headset for long period of wearing



背面 95mm x 145mm

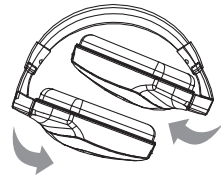
Hardware Diagram

D. Folding EXXSOUND NETTLEFISH II

To carry NETTLEFISH II with minimal space requirement, you can fold it in 2 different ways:



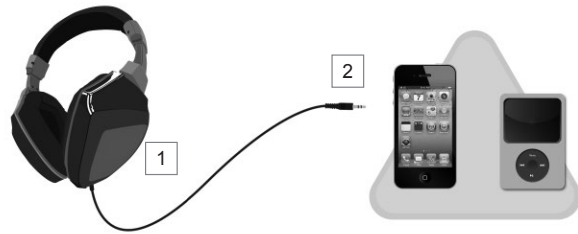
To fold the headset as flat as possible: Turn the ear cup 90° as illustrated and put it into the carry bag



To fold the headset as compact as possible: Fold the ear cups inward as illustrated and put it into the carry bag

Connect to MP3 / Smartphone / Tablet

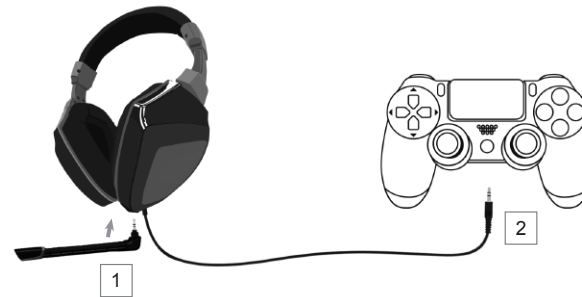
1. Built-in Microphone for communication
2. Plug the Headset 3.5mm jack into audio port on MP3 / Smartphone / Tablet



© Note: For some Smartphones, the pin layout might have different definition. Please contact the manufacturer for further information.

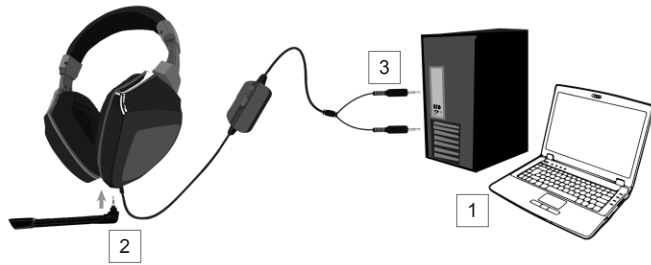
Connect to PS4™

1. Insert the Boom Microphone into the jack on the left earcup of the headset.
2. Plug the 3.5mm Plug Into PS4™ Controller
3. PS4™ Chat Function Settings:
Setting → Sound And Screen → Audio Output → Output To Headphones → Select All Audio



Connect to PC / Laptop

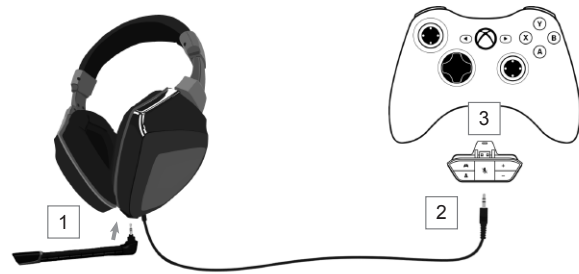
1. PC/Laptop must contains 4 rings plug
2. Insert the boom microphone into the jack on the left earcup of the headset.
3. Plug the 3.5mm jack into the 3.5mm port on PC or Laptop



5

Connect to XBOX ONE™

1. Insert the Boom Microphone into the jack on the left earcup of the headset.
2. Plug the 3.5mm jack into the Xbox One™ Audio Adapter
3. Insert the Xbox One™ Audio Adapter into the Xbox One™ Controller.



6

Important Information

PlayStation, PlayStation 2, PlayStation 3, PlayStation 4, PS2, PS3, PS4 and the respective images/logos are registered trademarks of Sony Computer Entertainment Inc. XBOX, XBOX360, XBOX ONE, XBOX Advanced AV Pack, XBOX Communicator, XBOX Live and the respective images/logos are registered trademark or trademarks of Microsoft Corporation in the U.S and/or other countries. All other trademarks are property of their respective owners. iPod, iPhone, iPad and the respective images/logos are registered trademarks of Apple Computer Inc.



7

EXXSOUND[®]
NETTLEFSIH II LITE USER GUIDE

www.goexsound.com