

SHARK VII Manual Table Of Contents

Package Contents	1
Safety Notice	2
Product Features	2
Hardware Diagram	3
Product Operation	5
LED Indicator	6
SHARK VII Connects to PC / Laptop	6
SHARK VII User Interface.....	7
Important Information	9

Package Contents

1. One EXSOUND SHARK VII Headset
2. One EXSOUND SHARK VII Touch Panel Inline Controller
3. One EXSOUND SHARK VII Microphone
4. One Operation Manual

Safety Notice

Warning

Continued exposure to high volumes of noise in headsets can cause long-term hearing damage. Your ears will adapt to loud volume levels over time and damage your hearing even if you don't feel any discomfort. Maintain the volume at an adequate level is important while using the headset. The louder the sound is, the less time it takes to affect your hearing. It is recommended that before putting the headset on, turn the volume down completely, then slowly increase it to a moderate and comfortable level.

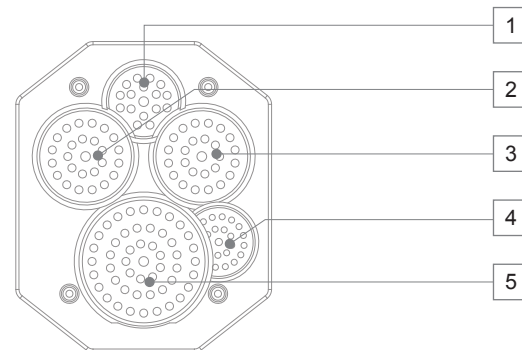
Product Features

EXSOUND SHARKVII - An Innovative USB Gaming Headset with REAL 7.1 Channels Surrounding Sound For Gaming / Movie/ Music via Touch Panel Operation.

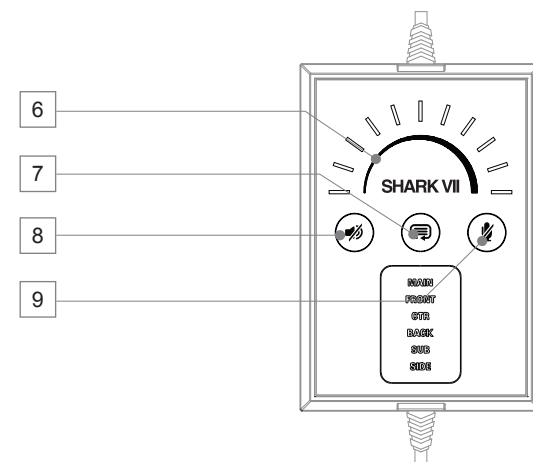
- Connect PC / Notebook with USB 7.1 Audio
- Adjust Master / Separate Channel Volume Control, Speaker Mute / Un-mute and Mic-mute / Un-Mute with Touch Panel Operation
- Build in Totally 10 Speaker Drivers, 5 on Each Side: FRONT, CTR, BACK, SUB and SIDE with Clear Channel Separation.
- Adjust Different Combinations of EQs, Surround Sound, and Mic Volumes with User Interface
- Comfortable Design Headset for Gamer for Long Period Wearing
- Detachable Microphone Design

Hardware Diagram

A. EXSOUND SHARK VII Five Speakers Position

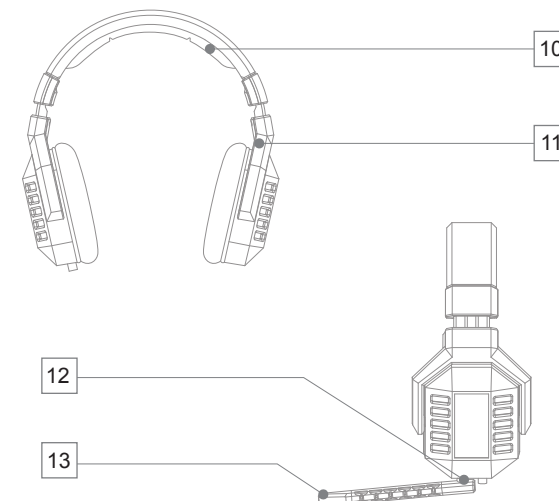


B. EXSOUND SHARK VII Touch Panel Inline Controller

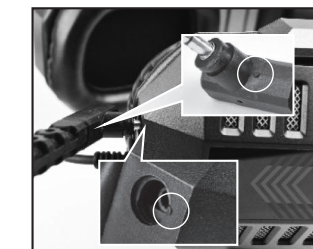


Hardware Diagram

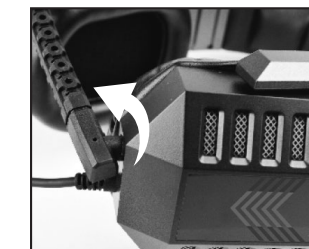
C. EXSOUND SHARK VII Headset



Note



Connect & Remove Microphone with Headset by Aligning Two Line.



Secure the Microphone by Rotating it 90 Degrees Counterclockwise

Hardware Diagram

A. EXSOUND SHARK VII Five Speakers Position

1. CTR Speaker
2. Front Speaker
3. Back Speaker
4. Side Speaker
5. SUB Speaker

B. EXSOUND SHARK VII Touch Panel Inline Controller

6. Volume Up / Down
7. Power On / Off, Switch for Channel Volume Control
8. Speaker Mute / Un-mute
9. Mic Mute / Un-mute

C. EXSOUND SHARK VII Headset

10. High Quality and Soft Material Headband
11. Easy to Adjust to Fit in Head Shape
12. Detachable Mic with Indicator
13. Omni-direction Mic

Product Operation

1. Touch power icon for 2 seconds to turn on. Touch for 2 seconds againto Turn off. Default is off.
2. Touch power icon for 1 second to change speaker channel volume adjustment Mode from main to FRONT, CTR, BACK, SUB and SIDE.
3. To change the volume, slide the curve line above the exsound logo to the right to increase the volume level, and slide the curve line to the left to decrease the volume level.
4. To reset factory-setting, touch power icon for 5 seconds.
5. To mute speakers sound, touch mute speakers icon to mute, touch again to un-mute. The default is un-mute.
6. To mute microphone, touch mute mic icon to mute, to un-mute, touch the icon again. The default is un-mute.
7. Connect & remove microphone with headset by aligning two dots, secure the microphone by rotating it 90 degrees counterclockwise.

LED Indicator

1. With in Left & Right Ear Cups
2. With in Touch Panel In-line Controller:
 - i. Indicator for Volume: Left means Smaller Sound, Right means Louder Sound
 - ii. Speaker Mute/Un-Mute: Light Off means Un-Mute, Light On means Mute. Default is Un-Mute (Light Off).
 - iii. Channel Volume Adjustment Mode: MAIN, FRONT, CTR, BACK, SUB, SIDE.
 - iv. Mic Mute/Un-Mute: Light Off means Un-Mute, Light On means Mute. Default is Un-Mute (Light Off).

SHARK VII Connects to PC / Laptop

TO ENJOY THE FULL EXSOUND SHARK VII EXPERIENCE, PLEASE ENSURE THE DRIVER TO BE INSTALLED COMPLETELY.

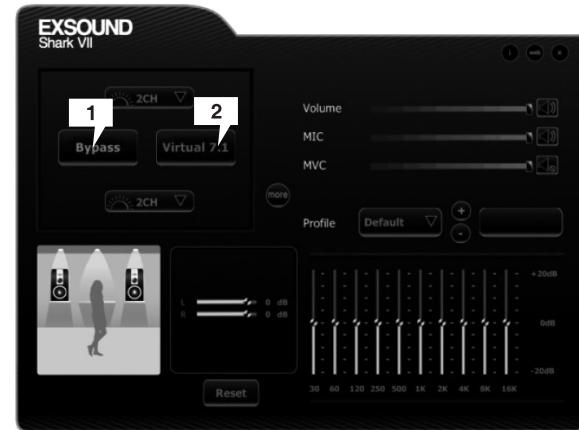
1. You can use driver disk or download the driver from www.goexsound.com
2. Please connect the USB connect or to an available USB port on your PC or Laptop
3. Install the driver.
4. Reboot your computer after the driver installation has completed
5. Power on, then you can enjoy the SHARK VII

TO MAKE SURE YOUR SHARK VII HEADSET WORKING PROPERLY, PLEASE CHECK YOUR PC AUDIO SETTING AS BELOW:

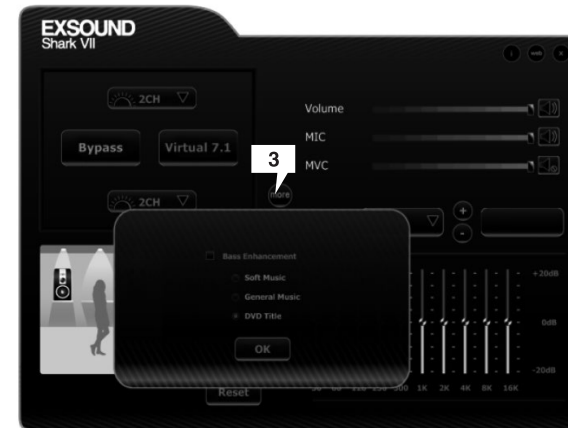
1. Go to Control panel > Sounds and Audio Devices > Audio > Sound Playback > Select "EXSOUND SHARK VII".
2. Go to Control panel > Sound and Audio Devices > Audio > Sound Recording > Select "EXSOUND SHARK VII".

EXSOUND SHARK VII User Interface

1. Bypass means original sound, without any processing. Click it to have original sound play. You can select different inputs and outputs: 2CH, 5.1CH, 7.1CH. Click it to have 7.1 channel Surround Sound effect.
2. Virtual 7.1 means the sound will be simulate to 7.1 channel Surround Sound. Click it to have 7.1 channel Surround Sound effect.
3. Click more to choose bass enhancement selection. There are three selections to choose.
4. Customize your own Surround Sound by moving each speakers location under virtual 7.1 mode.
5. EQ: There are many pre-set EQ to choose, such as Rock, Classic, Bass, Treble, etc. Choose one of your preference, or create your own EQ!



EXSOUND SHARK VII User Interface



Important Information

All other trademarks are property of their respective owners.



EXSOUND®
SHARK VII-USER GUIDE