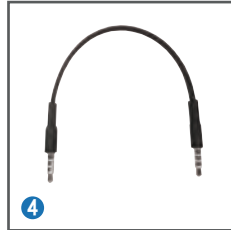


# EXSOUND Hippocampus User's Guide



# Package Contents

1. One EXSOUND Hippocampus Decoder Box
2. One EXSOUND Hippocampus Clip
3. One USB to Micro USB Cable
4. One 3.5 plug to 3.5 plug Cable
5. One Operation Manual

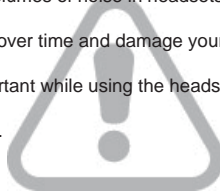


# Safety Notice

WARNING: Continued exposure to high volumes of noise in headsets can cause long-term hearing damage.

Your ears will adapt to loud volume levels over time and damage your hearing even if you don't feel any discomfort.

Keeping the volume at a safe level is important while using the headset. The louder the sound is set, the less time it takes to affect your hearing.



# Product Features / Hardware Diagram

## Product Features:

EXSOUND Hippocampus- Fashion and Light Design Decoder Box,

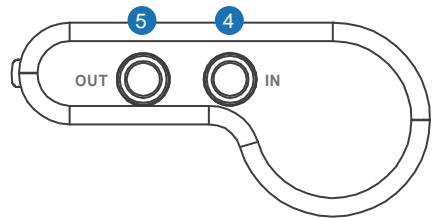
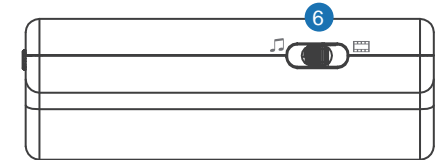
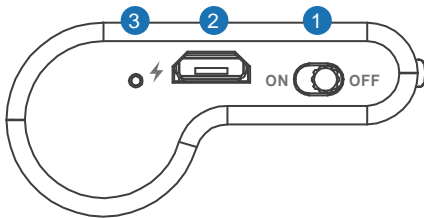
Enjoy your Dolby Surrounding Sound for Movie/Game/Music with iPad/iPhone.

- Connect with Your iPad/iPhone for Dolby Surrounding Effect, Don't need to Compromise with Sound Quality while being Mobile anymore.
- Dolby Approved for Dolby Pro Logic II & Dolby Headphone Decoder
- Empower Stereo Movie/Game/Music to 5.1 Surround Sound
- Light and Fashion Design, no burden to use with iPad/iPhone when going out
- Simple to use by easily plugging to the device and enjoy Dolby Surrounding Sound
- Work with Official Headset with Original Functions

**Hardware Diagram:** EXSOUND Hippocampus Decoder Box

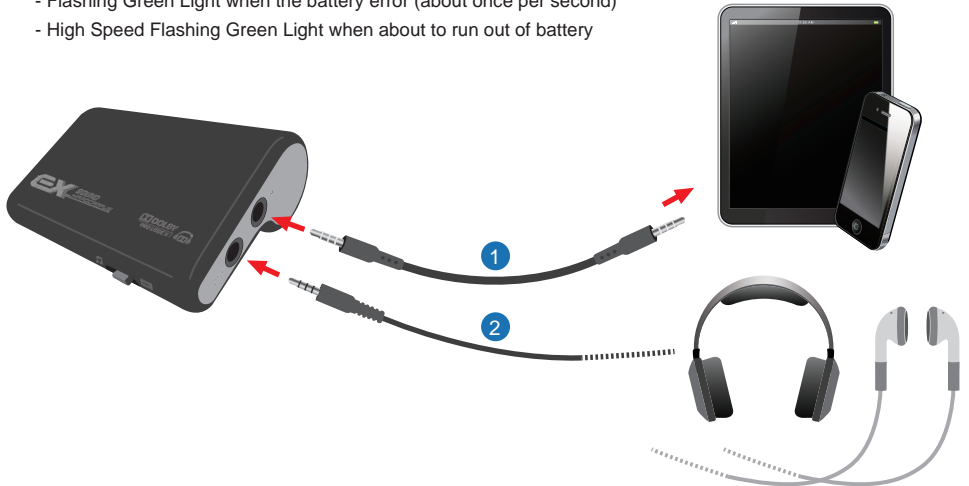
## EXSOUND Hippocampus Decoder Box

1. Power On/Off
2. Micro USB Jack for Recharging
3. LED Indicator for Recharging
4. Signal Input
5. Signal Output
6. Switch of Music Mode, Normal Mode and Movie Mode



# Product Operation & LED Indicator

1. Connect Hippocampus with iPad/iPhone by Plugging the 3.5mm to 3.5mm plug Cable on iPad/iPhone and the Signal Input jack on Hippocampus Decoder Box
2. Connect Hippocampus with the Headset by plugging to Signal Output
3. Power on Hippocampus Decoder Box
4. Micro USB Port for Battery Re-Charge: Use Micro USB Cable to Re-Charge the Chargeable Battery.  
Note 1: To Re-Charge the Chargeable Battery Must Power Off Hippocampus  
Note 2: It would be better for the battery if recharge before out of battery. Also, recharge every three month even it is not using would keep the battery works properly.
5. LED Indicator for Recharging:
  - Green Light when Recharging
  - Light Off when not at Recharging or when the Recharging is done
  - Flashing Green Light when the battery error (about once per second)
  - High Speed Flashing Green Light when about to run out of battery



## Important information

iPhone, iPad and respective images / logos are registered trademark of Apple Computer, Inc.

Manufactured under license from Dolby Laboratories. Dolby, Pro Logic, and the double-D symbol are registered trademarks of Dolby Laboratories.

All other trademarks are property of their respective owners.

